

# Access Doors

April 2015



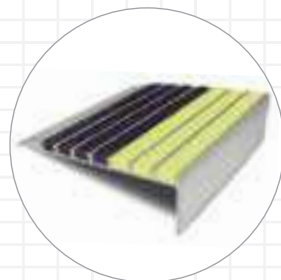
**Babcock-Davis<sup>®</sup>**

*Always right there.*



Babcock-Davis, a trusted name in the commercial construction industry, specializes in providing commercial building products. Architects, specifiers, general contractors, and distributors rely on the Babcock-Davis product line for a quality product with hassle-free fulfillment.

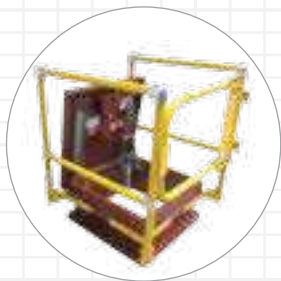
No matter your project requirements, Babcock-Davis is Always right there.



**Stair Treads & Nosings**  
05 51 00



**Fall Protection**  
05 52 13 / 07 72 00



**Roof Hatches**  
07 72 33



**Smoke Vents**  
07 72 36



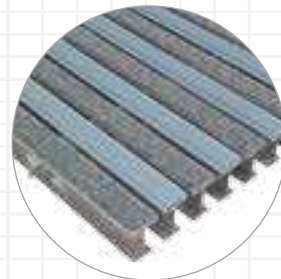
**Access Doors**  
08 31 00



**Floor Doors**  
08 31 00



**Wall & Door Protection**  
10 26 00



**Entrance Flooring**  
12 48 13 / 12 48 16

## Now Offering Architectural Stainless Steel



Babcock-Davis, the industry leader in access doors, introduces the new T304 Stainless Steel Architectural Access Door.

Built with the same design as our cold rolled steel Architectural Door, the stainless steel option is ideal for projects where aesthetics or performance are critical.

The new stainless steel option features our patent-pending Easy Install Tabs for painless drywall installation along with a revolutionary anti-flex frame design.

With Babcock-Davis, innovation is Always right there.

888.412.3726  
BabcockDavis.com



## Non-Rated

pg 5-7

- Architectural
- Renovation
- Recessed

The non-rated access door family contains Babcock-Davis' most popular designs for standard applications.



## Fire-Rated

pg 7-9

- Insulated
- Uninsulated
- Oversized Attic
- Tile Ready
- Upward Opening

Maintain your wall or ceiling fire protection performance and contain fires from spreading through the opening with fire-rated access doors.



## Security

pg 10-12

- Medium
- High
- Top
- Fire-Rated

When access needs to be restricted, Babcock-Davis security doors have you protected.



## Specialty

pg 12-14

- Drywall
- Draft Stop
- Exterior
- Lightweight
- Plastic

## Options

pg 15

Learn about the many options we offer for you to customize your door, including material types, flange styles, latch options, and more.

The Babcock-Davis Architectural Access Door is built with the architect in mind. Constructed with an industry-standard 14 gauge steel door, the updated design further improves on strength and aesthetics.

- DOOR: 14 gauge cold rolled steel or 16 gauge T304 Stainless Steel
- FRAME: 16 gauge cold rolled steel or 16 gauge T304 Stainless Steel
- HINGE: Concealed spring button
- PAN DEPTH: 1/2"
- FINISH: Gray powder paint or Mill
- OPTIONS: Flanges, Latches, Gaskets, Masonry Anchors and Stainless Steel

## Features



### Anti-flex frame

Screws are inserted through our patent-pending Easy Install Tabs, firmly fitting the door to the wall without flexing the frame.



### Painless installation

When mounting screws are not required, quickly and easily install your new panel by bending our patent-pending Easy Install Tabs over the drywall.



### Optional stainless steel

The spot free design on the face of the door gives an aesthetically pleasing appearance.



BNTC1212

CUSTOM SIZING



BN

FLANGE

LATCH

WIDTH

HEIGHT

OPTIONS



FLANGE	
T	1" Flange
W	Drywall bead
P	Plaster casing

LATCH	
C	Screwdriver cam latch
L	Key operated cam latch
M	Mortise lock (1-1/8") prep
N	Knurled Knob

STANDARD SIZES (WIDTH & HEIGHT)				
6" x 6"	12" x 24"	18" x 24"	24" x 30"	32" x 32"
8" x 8"	14" x 14"	20" x 30"	24" x 36"	36" x 36"
10" x 10"	16" x 16"	22" x 22"	24" x 48"	36" x 48"
12" x 12"	16" x 20"	22" x 30"	30" x 30"	
12" x 18"	18" x 18"	24" x 24"	30" x 36"	

OPTIONS	
S	T304 Stainless Steel
B	Bonderized / galvanized
G	Gasketing
M	Masonry anchors

Custom sizes are available. Rough opening is door size + 1/4".

# Renovation Access Door

The Babcock-Davis Renovation Access Door is a lighter gauge alternative to the Architectural Door (pg 5). The panel features an industry-leading design to provide superior durability and functionality.

- DOOR: 20 gauge cold rolled steel
- FRAME: 20 gauge cold rolled steel
- HINGE: Concealed spring button
- PAN DEPTH: 1/2"
- FINISH: Gray powder paint

## Features



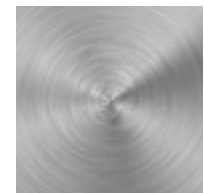
### Anti-flex frame

Fasteners are inserted through our patent-pending Easy Install Tabs, firmly fitting the door to the wall without flexing the frame.



### Painless installation

When fasteners are not required, quickly and easily install your new panel by bending our patent-pending Easy Install Tabs over the drywall.



### A lighter gauge alternative

With all of the same features as the Babcock-Davis Architectural Access Door (pg 5), the Renovation Door is a perfect complement for applications where a lighter material gauge is acceptable.



BETC1212

CUSTOM SIZING



**BE**    X

FLANGE		LATCH		STANDARD SIZES (WIDTH & HEIGHT)					OPTIONS	
T	1" Flange	C	Screwdriver cam latch	6" x 6"	12" x 24"	18" x 24"	24" x 30"	32" x 32"	B	Bonderized / galvanized
W	Drywall bead	L	Key operated cam latch	8" x 8"	14" x 14"	20" x 30"	24" x 36"	36" x 36"	G	Gasketing
		N	Knurled Knob	10" x 10"	16" x 16"	22" x 22"	24" x 48"			
				12" x 12"	16" x 20"	22" x 30"	30" x 30"			
				12" x 18"	18" x 18"	24" x 24"	30" x 36"			

Custom sizes are available. Rough opening is door size + 1/4".

# Recessed Access Door

The non-rated Recessed Access Door provides access through openings in vertical or horizontal surfaces. This door is designed to receive 5/8" drywall to match the surrounding surfaces.

- DOOR: 16 gauge cold rolled steel
- FRAME: 16 gauge cold rolled steel
- HINGE: Concealed pivoting rod
- PAN DEPTH: 5/8"
- FINISH: Gray powder coat paint

CUSTOM SIZING



BRWC1212

**BR**    X

FLANGE		LATCH		STANDARD SIZES (WIDTH & HEIGHT)			OPTIONS	
A	No flange	C	Screwdriver cam latch	8" x 8"	18" x 18"	24" x 30" *	B	Bonderized / galvanized
W	Drywall bead	L	Key operated cam latch	12" x 12"	20" x 30" *	24" x 36" *	G	Gasketing
P	Plaster casing	M	Mortise lock (1-1/8") prep	16" x 16"	24" x 24" *		S	T304 Stainless steel

Custom sizes are available. Rough opening is door size + 1/4".  
\* Horizontal applications only.

# Insulated Access Door

The I-Series Insulated Access Door provides access through openings in fire-rated walls and ceilings.

- DOOR: 20 gauge cold rolled steel
- FRAME: 16 gauge cold rolled steel
- HINGE: IT: Flush continuous piano  
IW/IP: Concealed pin
- FINISH: Gray powder paint
- INSULATION: 2" thick fire rated mineral fiber
- CERTIFICATION: UL listed "B" label for 1-1/2 hrs (vertical)  
Warnock-Hersey listed for 3 hrs (horizontal)

FIRE-RATED



CUSTOM SIZING



BITK1212

**BI**    X

FLANGE		LATCH		STANDARD SIZES (WIDTH & HEIGHT)					OPTIONS	
T	1" Flange	K	Knurled knob / key operated latch bolt	8" x 8"	14" x 14"	22" x 22"	24" x 36"	36" x 48" *	B	Bonderized / galvanized
W	Drywall bead	M	Mortise lock (1-1/8") prep	10" x 10"	16" x 16"	22" x 30"	24" x 48" *	48" x 48" *	G	Gasketing
P	Plaster casing			12" x 12"	18" x 18"	22" x 36"	30" x 30" *		M	Masonry anchors
				12" x 18"	18" x 24"	24" x 24"	32" x 32" *		S	T304 Stainless steel
				12" x 24"	20" x 30"	24" x 30"	36" x 36" *			

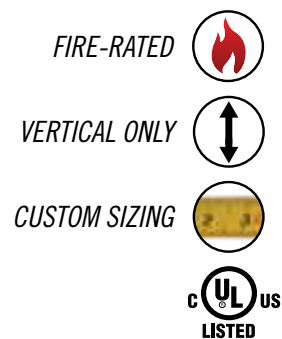
Custom sizes are available. Rough opening is door size + 1/4".  
\* Vertical applications only.



## Uninsulated Access Door

Babcock-Davis' U-Series fire-rated, Uninsulated Access Door provides access through openings in fire-rated walls.

DOOR: 14 gauge cold rolled steel  
 FRAME: 16 gauge cold rolled steel  
 HINGE: UT: Flush continuous piano  
 UW/UP: Concealed pin  
 FINISH: Gray powder paint  
 CERTIFICATION: UL listed "B" label for 1-1/2 hrs



BUTK1212

**BU**    X

FLANGE	
T	1" Flange
W	Drywall bead
P	Plaster casing

LATCH	
K	Knurled knob / key operated latch bolt
M	Mortise lock (1-1/8") prep

STANDARD SIZES (WIDTH & HEIGHT)			
8" x 8"	16" x 16"	22" x 36"	32" x 32"
10" x 10"	18" x 18"	24" x 24"	36" x 36"
12" x 12"	18" x 24"	24" x 30"	36" x 48"
12" x 18"	20" x 30"	24" x 36"	
12" x 24"	22" x 22"	24" x 48"	
14" x 14"	22" x 30"	30" x 30"	

OPTIONS	
B	Bonderized / galvanized
G	Gasketing
M	Masonry anchors
S	T304 Stainless steel

Custom sizes are available. Rough opening is door size + 1/4".

## Tile Ready Access Door

The RU Series Tile Ready Access Door is fire-rated, uninsulated and provides access through openings in wall surfaces for ceramic tile applications. When installed, the door and frame is concealed, providing an aesthetically pleasing appearance.

DOOR: 14 gauge bonderized/galvanized steel  
 FRAME: 16 gauge bonderized/galvanized steel  
 HINGE: Cabinet type  
 FINISH: None  
 CERTIFICATION: UL listed "B" label for 1-1/2 hrs



BRUTK1212

**BRU**    X

FLANGE	
T	1" Flange
W	Drywall bead

LATCH	
K	Knurled knob / key operated latch bolt
M	Mortise lock (1-1/8") prep

STANDARD SIZES (WIDTH & HEIGHT)		
8" x 8"	16" x 16"	24" x 24"
12" x 12"	18" x 18"	

MATERIAL	
B	Bonderized / galvanized
S	T304 Stainless steel

Custom sizes are available. Rough opening is door size + 1/4".

## Oversized Attic Access Door

The Oversized Attic Access Door allows access into ceilings when oversized or double door applications are required. The double leaf design allows objects to clear which may interfere with door openings.

DOOR: 18 gauge bonderized steel  
 FRAME: 16 gauge bonderized steel  
 HINGE: Concealed continuous rod  
 LATCH: 1/4" Allen head key  
 FINISH: Gray powder paint  
 INSULATION: 1-1/2" non-combustible, high temperature  
 CERTIFICATION: Warnock-Hersey listed for 2 hrs (standard)  
 Warnock-Hersey listed for 3 hrs (with T option)



BFRD3648DW

**BFRD**  X

STANDARD SIZES (WIDTH & HEIGHT)		
36" x 60"	40" x 60"	48" x 60"

OPTIONS			
D	Double door	T	3-Hour rated
M	Mortise lock (1-1/8") prep	C	Ceiling application
S	T304 Stainless steel	W	Wall application

Custom sizes are available. Rough opening is door size.

## Upward Opening Access Door

Babcock-Davis' fire-rated Upward Opening Access Door is designed for ceiling applications when the door must swing upward into a ceiling cavity.

DOOR: 18 gauge cold rolled steel  
 FRAME: 16 gauge cold rolled steel  
 HINGE: Concealed continuous piano  
 LATCH: 1/4" Allen head key  
 FINISH: Gray powder paint  
 INSULATION: Non-combustible, high temperature  
 CERTIFICATION: Warnock-Hersey listed for 2 hrs



BIUA2436

**BIUA or BFRU**  X

STANDARD SIZES (WIDTH & HEIGHT)		
12" x 12"	18" x 18"	22" x 36"
14" x 14"	22" x 22"	24" x 36"

STANDARD SIZES (WIDTH & HEIGHT)		
24" x 48"	30" x 36"	32" x 32"
30" x 30"	30" x 48"	36" x 36"

OPTIONS	
B	Bonderized / galvanized
G	Gasketing
S	T304 Stainless steel

Custom sizes are available. Use IUA for access doors 24" x 36" or smaller; FRU for larger doors. Rough opening is door size + 1/4".

## Medium Security Access Door

The Medium Security Access Door is manufactured with heavy-duty materials to prevent unwanted access for installation in any wall or ceiling.

DOOR: 12 gauge cold rolled steel  
 FRAME: 12 gauge cold rolled steel  
 HINGE: Concealed continuous piano  
 FINISH: Gray powder paint



BMTM1818

**BM**    X

FLANGE		LATCH		STANDARD SIZES (WIDTH & HEIGHT)				OPTIONS	
T	1" Flange	M	Mortise lock (1-1/8") prep	8" x 8"	16" x 16"	22" x 30"	30" x 36"	B	Bonderized / galvanized
W	Drywall bead	P	Pinned allen head cam latch(es)	10" x 10"	16" x 20"	24" x 24"	32" x 32"	G	Gasketing
P	Plaster casing	S	Pinned allen head security screw(s)	12" x 12"	18" x 18"	24" x 30"	36" x 36"	M	Masonry anchors
				12" x 18"	18" x 24"	24" x 36"	36" x 48"	S	T304 Stainless steel
				12" x 24"	20" x 30"	24" x 48"			
				14" x 14"	22" x 22"	30" x 30"			

Custom sizes are available. Rough opening is door size + 1/4".

## Top Security Access Door

Babcock-Davis' Top Security Access Door is manufactured with detention-grade materials and provides access through openings in walls and ceilings. The pan style access door includes a heavy-duty butt hinge welded on the surface of the door to prevent unwanted access.

DOOR: 7 gauge hot rolled steel  
 FRAME: 2" x 3" x 3/16" steel angle  
 HINGE: Surface-mounted heavy-duty butt  
 PAN DEPTH: 1-1/4"  
 FINISH: Gray powder paint



BTSD3636

**BTS**   X

LATCH		STANDARD SIZES (WIDTH & HEIGHT)				OPTIONS	
D	Detention lock prep	12" x 12"	18" x 18"	24" x 24"	24" x 40" *	G	Gasketing
M	Mortise lock (1-1/8") prep	16" x 16"	22" x 30"	24" x 36" *	24" x 48" *	M	Masonry anchors
						S	T304 Stainless steel

Custom sizes are available. Rough opening is door size + 1/4".  
 \* Recommended for vertical surfaces only.

## High Security Access Door

The High Security Access Door provides secure access in walls and ceilings and is manufactured with detention-grade materials. This access door is engineered with a surface mount butt joint hinge on the face of the door to prevent unwanted access.

DOOR: 10 gauge cold rolled steel  
 FRAME: 2" x 2" x 3/16" steel angle  
 HINGE: Surface-mounted heavy-duty butt  
 FINISH: Gray powder paint



BHSD2424

**BHS**   X

LATCH		STANDARD SIZES (WIDTH & HEIGHT)				OPTIONS	
D	Detention lock prep	12" x 12"	18" x 18"	24" x 24"	24" x 40" *	G	Gasketing
M	Mortise lock (1-1/8") prep	16" x 16"	22" x 30"	24" x 36" *	24" x 48" *	M	Masonry Anchors
S	Security screws					S	T304 Stainless Steel

Custom sizes are available. Rough opening is door size + 3/4".  
 \* Recommended for vertical surfaces only.

## Fire-Rated Security Access Door

The insulated Fire-Rated Security Access Door is constructed of heavy-duty materials to prevent unwanted access through openings in fire-rated vertical surfaces.

DOOR: 14 gauge cold rolled steel  
 FRAME: 16 gauge cold rolled steel  
 HINGE: ST: Flush continuous piano  
 SW/SP: Concealed pin  
 FINISH: Gray powder paint  
 INSULATION: 2" thick fire rated mineral fiber  
 CERTIFICATION: UL listed "B" label for 1-1/2 hrs



BSTK1212

**BS**   X

FLANGE		LATCH		STANDARD SIZES (WIDTH & HEIGHT)				OPTIONS	
T	1" Flange	K	Knurled knob / key operated latch bolt	12" x 12"	22" x 30"	24" x 40"		B	Bonderized / galvanized
W	Drywall bead	M	Mortise lock (1-1/8") prep	16" x 16"	24" x 24"	24" x 48"		G	Gasketing
P	Plaster casing			18" x 18"	24" x 36"			M	Masonry anchors
								S	T304 Stainless steel

Custom sizes are available. Rough opening is door size + 1/4".

## Drywall Access Door

The Drywall Access Door comes with standard 1/2" or 5/8" drywall installed in the door pan. Available with options for tile-ready, a removable door or a pin hinge, the door is ready for use in five standard sizes to match the surrounding surface.

DOOR: Welded Aluminum, Drywall Infill  
 FRAME: Welded Aluminum  
 LATCH: Push Latch  
 HINGE: Welded Pin  
 FINISH: Mill



BRGB1212



**BRG** APPLICATION WIDTH X HEIGHT OPTIONS - INFILL

APPLICATION	STANDARD SIZES (WIDTH & HEIGHT)	OPTIONS	INFILL
B STB Pin Hinged	8" x 8" 20" x 20"	C Screw Driver Cam Latch	.5 1/2" Drywall
BR Removable Door	12" x 12" 24" x 24"	D Double Door	.625 5/8" Drywall
T Tile	16" x 16"	L Key Operated Cam Latch	

## Draft Stop Access Door

Babcock-Davis' Draft Stop Door is a non-rated access door designed to provide access through wall openings of draft stop spaces in the attic while preventing a back draft from one section of the attic to another. This self-closing and self-latching access door allows for access from both sides of the door.

DOOR: 14 gauge cold rolled steel (self-closing)  
 FRAME: 16 gauge cold rolled steel  
 HINGE: Flush continuous piano  
 FINISH: Gray powder paint

VERTICAL ONLY   
 CUSTOM SIZING 



BDTK2230

**BD** FLANGE LATCH WIDTH X HEIGHT OPTIONS

FLANGE	LATCH	STANDARD SIZES (WIDTH & HEIGHT)	OPTIONS
T 1" Flange	K Knurled knob / key operated latch bolt	22" x 36" 24" x 60" 36" x 36"	B Bonderized / galvanized
W Drywall bead	M Mortise lock (1-1/8") prep	24" x 36" 30" x 30" 36" x 48"	G Gasketing
		24" x 48" 30" x 36"	S T304 Stainless steel

Custom sizes are available. Rough opening is door size + 1/4".

## Exterior Access Door

The Babcock-Davis Exterior Access Door provides efficient access from the exterior of your building without compromising security or weather resistance.

DOOR: 24 gauge galvanized steel  
 FRAME: .080" 6063-T5 extruded aluminum  
 HINGE: Stainless steel continuous piano  
 FINISH: Door: Paint grip finish  
 Frame: Mill  
 INSULATION: 2" polyurethane with 11 R-value  
 GASKETING: EPDM self-adhesive, continuous gasket



BXTM1212

### Features



#### Compatible with building key

With the mortise lock prep option, you can match the mortise cylinder to that of your building's other access points.



#### Insulated for temperature control

With 2" polyurethane insulation, the Babcock-Davis Exterior Door is constructed to protect your building from the harshest climates.



#### Tested for air & water penetration

Independent lab testing for air leakage per ASTM E 283 and water leakage per ASTM E 331-00 assures the best protection against the elements.

CUSTOM SIZING 

**BX** FLANGE LATCH WIDTH X HEIGHT OPTIONS

FLANGE	LATCH	STANDARD SIZES (WIDTH & HEIGHT)	OPTIONS
T 1" Exposed Flange	A Non-locking handle	12" x 12" 20" x 30" 24" x 36"	A Aluminum Door
P Plaster/Stucco Bead	D Locking D-ring	16" x 16" 24" x 24" 36" x 36"	C Drip Cap
	L Locking handle	18" x 18" 24" x 30"	E Embossed Aluminum Door
	P Padlock hasp		G Galvanized Door
	M Mortise lock (1-1/8") prep		P Padlock Hasp
	C Screwdriver cam latch		S T304 Stainless Steel Door

Custom sizes are available. Rough opening is door size.



# Lightweight Access Door

Babcock-Davis' non-rated insulated Lightweight Access Door offers a solution to larger openings in wall and ceiling applications. The door is available in pre-finished, embossed, galvanized steel and aluminum door skins.

CUSTOM SIZING



- DOOR: 26 gauge pre-finished embossed galvanized steel
- FRAME: .045" 6063-T5 extruded aluminum
- HINGE: Aluminum continuous piano
- FINISH: Door skin: White embossed steel  
Frame: Clear anodized aluminum
- FLANGE: Rolled 1-5/16" wide
- INSULATION: 3/4" polystyrene with 3.8 R-value



BLWT1212

**BLW** LATCH WIDTH X HEIGHT OPTIONS

LATCH	
T	Screwdriver cam latch
L	Key operated cam latch

STANDARD SIZES (WIDTH & HEIGHT)			
12" x 12"	24" x 24"	30" x 36"	72" x 48" *
18" x 18"	24" x 36"	36" x 36"	
22" x 30"	24" x 48"	48" x 48" *	
22" x 36"	30" x 30"	60" x 48" *	

OPTIONS	
A	Aluminum insert panel
G	Gasketing

Custom sizes are available. Rough opening is door size + 1/4".  
\* Double door construction.

# Plastic Access Door

This Plastic Access Door provides simple and inexpensive access through a vertical or horizontal surface in residential or light-duty applications. The lightweight design with a removable door is easily installed by applying glue or adhesive to the back of the frame.

- DOOR: 1/8" high impact styrene plastic removable door
- FRAME: Reversible 3/4" flange
- LATCH: Snap latches securing door
- FINISH: Texturized white finish



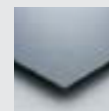
BPL0808

**BPL** WIDTH X HEIGHT

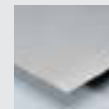
AVAILABLE SIZES (WIDTH & HEIGHT)	
6" x 9"	14" x 14"
8" x 8"	14" x 29"

# Options

## MATERIALS

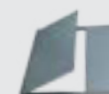


**B Galvanized / bonderized steel**  
With primer coat. Use where corrosive resistance is required.



**S Stainless steel type #304**  
Extremely resistant to corrosion. With #4 satin polish finish.

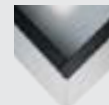
## ADDITIONAL OPTIONS



**D Double leaf access panel**  
Recommended for easy access to large openings.



**C Drip cap on frame**  
Directs running water away from the face of the panel.



**G Gasketing**  
Applied to the doorstops for weather resistance. Also available with UL listed smoke seal.



**L Louvered door**  
Provides ventilation for special applications.

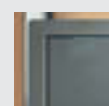


**M Masonry anchors**  
Attached to the frame to secure the panel when installed in masonry.

## HINGE OPTIONS



**H Continuous piano hinge**  
Provides specification compliance when required.



**Z Concealed continuous piano hinge**  
Provides added security while maintaining superior aesthetics.

## FLANGES



1" Flange



Drywall bead



Plaster bead

## LATCH & LOCK OPTIONS



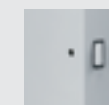
**C Screwdriver operated cam latch**  
Most common. Appropriate for standard applications.



**S Security screw - Pinned hex head**  
Highest security without a lock - requires special pinned allen wrench to open the panel.



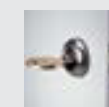
**N Knurled knob cam latch**  
Unrestricted access - no tool required. Finger operated.



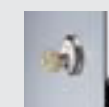
**K Knurled knob/key operated latch bolt**  
Patented ball bearing latch bolt operated by a screw-in type knurled knob or flush key.



**D Detention lock preparation**  
For heavy-duty detention deadbolt lock. Used in maximum security applications.



**L Key operated cam lock**  
Provides an economical solution for controlled access when locks are required.



**M Mortise cylinder lock preparation**  
Very secure. Matches project hardware. Accepts standard 1.125" mortise cylinder.

## POWDER COATING OPTIONS



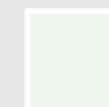
FP1  
ANSI 70  
Gray



FP3  
Bone  
White

Note: ANSI 70 Gray is the base color, all other colors have additional charges and may require longer lead times.

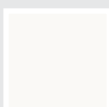
Colors shown give only an indication of shade. Samples are available upon request.



FP43  
Traffic  
White

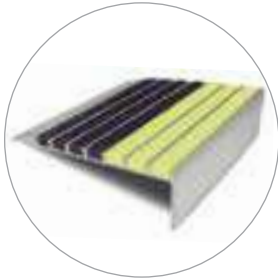


FP44  
High  
Reflectance  
White



FP64  
Arctic  
White

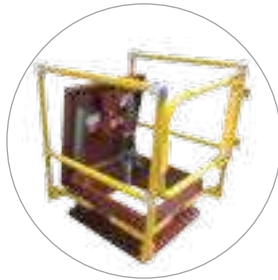




**Stair Treads & Nosings**  
05 51 00



**Fall Protection**  
05 52 13 / 07 72 00



**Roof Hatches**  
07 72 33



**Smoke Vents**  
07 72 36



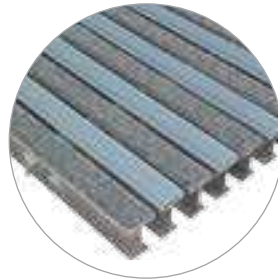
**Access Doors**  
08 31 00



**Floor Doors**  
08 31 00



**Wall & Door Protection**  
10 26 00



**Entrance Flooring**  
12 48 13 / 12 48 16